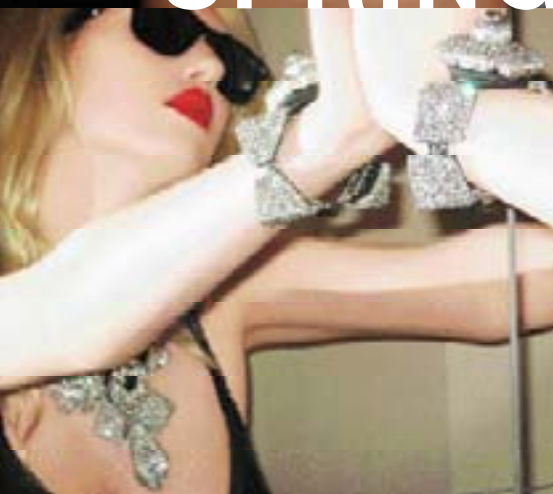




## SPRING / SUMMER 2010



The spring Summer 2010 collections, inspired by the retro of the courtesans mix with technicolor péplum movie.

This season is about creating the atmosphere of the strong color, flashy and sulphurous.

An explosive mixture of the universe as an envy theatrical fineries of the Cleopatra.

Architectural plastron and multicolored swarovski Crystal embroidery clutch. The mixing of techno paillettes and métal antique sequins/

The intense mixing color palette of Emerald green, Smoked topaz, Blue Montana, Fushia, néon pink, violet and antique silver.

### Shourouk Rhaiem

shourouk@shourouk.fr  
+ 33 6 3739 1656  
www.shourouk.fr

The idea of mixing one necklace to be wore with another necklace, will create another challanging atmosphere Will adding a finery attitude to a daily outfits